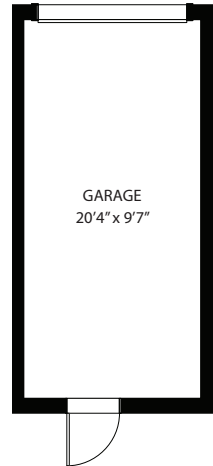
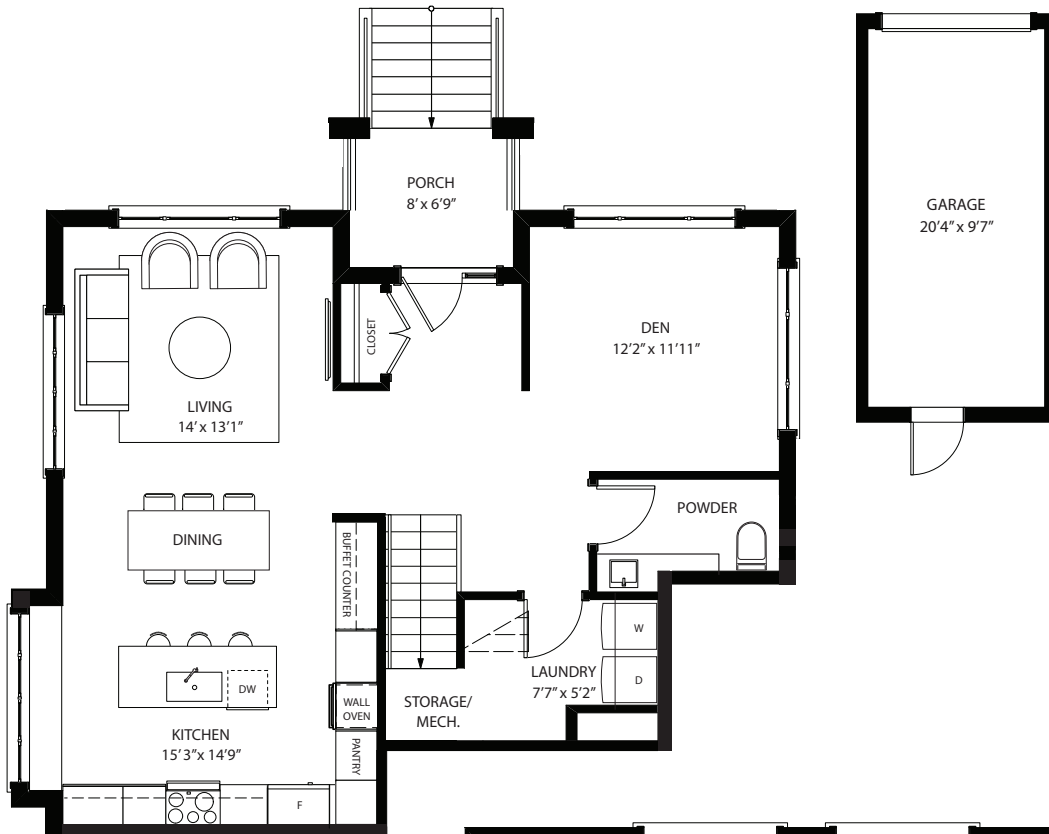


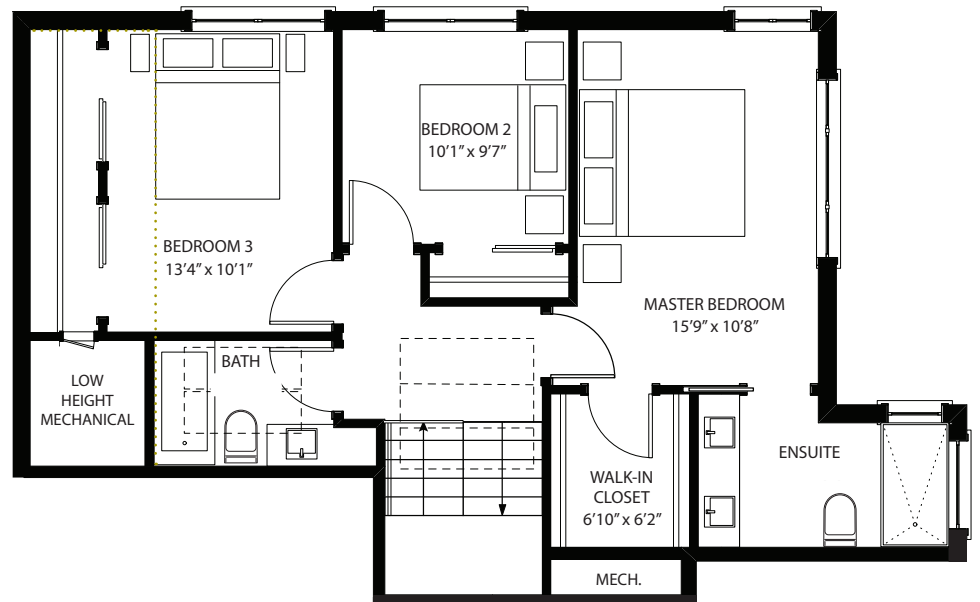
Dwell

on Larch



^ Main
963 sf

Upper >
889 sf



.....
Denotes
6' ceiling

Denotes
skylight

Cedar NORTH 3 bed + den | 2.5 bath

Interior sf 1,852 Outdoor sf 54 Yard sf 683 Total living sf 1,906

5270 Larch Street

This is not an offering for sale. Any such offering can only be made with a disclosure statement. The developer reserves the right to substitute any material, fixture, appliance or finishing with an equivalent material, fixture, appliance or finishing at the developer's sole discretion. In our continuing effort to meet the challenge of product improvement, we reserve the right to modify or change plans, specifications or prices without notice. Renderings are an artist's conception only and are intended as a general reference. All dimensions and sizes are approximate. As reserve plans occur throughout the project, please check architectural plans. Refer to disclosure statement for specific offering details. E. & O.E.